

Scan to subscribe
to our newsletter



*Free Monthly Legal Support
Direct to Your Inbox



Google
Reviews ★★★★★

"The Yosha Law Firm has helped me with legal matters for 40+ years. During the last representation, I had difficulty with some expensive dental work. One of the partners of the firm was leading the effort to recoup my funds that I had paid for the dental work.

Needless to say, we were successful during this time (over a period of approximately 90 days). I was kept informed, phone conferences were utilized, and it was another great experience for me with The Yosha Law Firm. All of the adjectives for the 5 star rating were prevalent during those 90 days of legal work that were done."
- JACK BRINSON

AUGUST 2022
(317) - 732 - 1060 YoshaLaw.com

FEAUTURED ARTICLE

Three Types of Product Liability
Claims Everyone Should Know



@YoshaLaw @YoshaLaw @YoshaLaw



The Legal Scoop

An Exclusive Publication From Yosha Law

IN THIS ISSUE:

- Three Types of Product Liability Claims Everyone Should Know
- American Association for Justice
- Indiana's Most Dangerous Interstates



172
Years
COMBINED LEGAL
EXPERIENCE

100+
Verdicts
VERDICTS BEATING
PRE-TRIAL OFFERS

Hundreds
of Millions
RECOVERED IN
SETTLEMENTS &
VERDICTS

98%
SUCCESS RATE IN
BEATING AN INSURER'S
FINAL OFFER

4x
AVERAGE WE BEAT THE
INSURER'S FINAL OFFER





\$3.2 Million Settlement

Insurance Offered
\$300,000.00

Motor Vehicle Accident:
Our client was a young child who was a passenger in the backseat of a vehicle struck by another car. The child’s head flew into the back of the seat in front of him. The child suffered from a permanent mild traumatic brain injury.

Get a Free Case Evaluation at:
<https://yoshalawfirm.com>

Available 24/7 & Obligation Free



Three Types of Product Liability Claims Everyone Should Know

We use and are surrounded by commercial products every day. Sometimes these products can be faulty and lead to severe injuries to consumers. In Indianapolis, you can file a product liability claim to recover the damages, pain and suffering, and other losses that a faulty product may have caused. The Indiana Products Liability Act, commonly known as “the Act,” governs all product liability cases and defines what constitutes a defective product.

Manufacturing Defect

A manufacturing defect is defined as a properly designed product but left the manufacturer in a faulty manner or other condition than intended. For example, during the manufacturing process of an over-the-counter medication, it was infected with an incorrect ingredient. The medicine could cause major harm to anyone who consumed it due to unintentional contamination.

Design Defect

A design defect is when a product fails to work as safely as a reasonable person would expect, even when used as intended. This is because the design of the product itself is inherently unsafe, such as a crib with bars that are too far apart that could allow an infant to fall through.

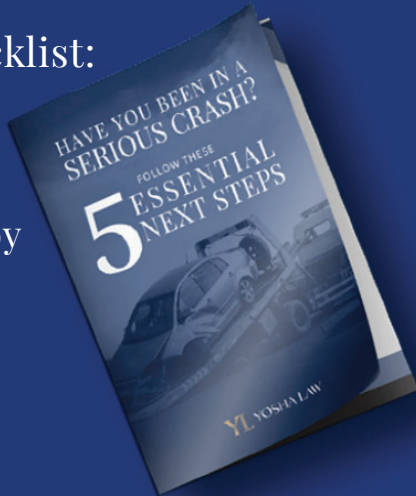
Failure to Warn

Manufacturers have a legal responsibility to warn users about the risks that come with using their products. If they fail to do so, it constitutes as a failure to warn. For example, if someone ingested harmful chemicals after microwaving a food container because the packaging failed to warn consumers that it was not microwave-safe.

I’ve Been in an Accident! What next?

Download our free checklist:

5 Things To Do After An Accident and find out the critical mistakes madae by personal injury victims (the ones insurance companies are praying you’ll make)



Consequences of Defective Products

Damages caused by a defective product can be physical, emotional, temporary, or permanent. Injuries caused by defective products include but are not limited to;

- Choking
- Burning
- Electrocution
- Broken bones
- Organ failure
- Wrongful death

Filing a product liability claim can help you establish negligence and help you recover economic and non-economic damages.

Contact a Product Liability Lawyer Today

The skilled and knowledgeable lawyers at Yosha, Cook & Tisch have years of experience handling product liability claims. We understand the importance and care needed to help you or a loved one injured by a defective product. Our firm could fight endlessly for you and your family to receive the compensation and justice you deserve. If you are looking for legal assistance to help you file a product liability claim, visit our firm today.

Read and watch more at:
<https://yoshalawfirm.com/blog/>



Our Success Stories

\$20.3 Million

\$20,325,000 verdict against a Fortune 500 Energy Company following an electric shock injury, rendering our client permanently disabled with chronic neuropathic pain.

\$7.5 Million

Slip and Fall case against National Car Rental. Verdict Amount \$7.5 Million Dollars, which includes \$2.5 Million in loss of services for the plaintiff’s spouse. Plaintiff required a total hip replacement.

\$5 Million

Motor Vehicle Accident. A passenger in a vehicle driven by a friend who wanted to demonstrate the speed of his new car. The driver hit a curb, and the passenger suffered a traumatic brain injury.

Indiana’s Most Dangerous Interstates

No road is completely safe from car accidents, but you’ll often find that some roads are inherently more dangerous and prone to frequent car accidents than others. Common contributing factors to dangerous roads include limited visibility, frequent bicyclists, frequent curves in the road, and drivers traveling at high speeds. Interstate highways are especially dangerous because drivers are often traveling at speeds upwards of 85 mph. Indiana’s most dangerous interstates include I-80, I-70, and I-65.

Semi-Trucks on Interstate-80

Interstate-80 runs east to west throughout the country and Indiana. The frequency of semi-trucks on Interstate-80 makes it one of the State’s most dangerous roads. Accidents involving tractor-trailers tend to be quite severe. It is therefore advisable to take caution when traveling on I-80 and avoid driving in the blind spots of commercial trucks.

Road Work on Interstate-70

Interstate-70 is another east-west highway that passes through Indiana. Frequent road work on I-70 leads to an increase in car accidents on the interstate. Drivers should be aware of road work and slow down appropriately to avoid unusual obstacles, construction vehicles and personnel, and debris.

Reckless Drivers on Interstate-65

Interstate-65 is a north-south highway that passes through Indiana and spans the length of the country. I-65 is a road frequently used by commuters traveling to and from work. This heavy traffic can lead to long backups and irritated and reckless drivers. Reckless driving and speeding are common on I-65, so you should always practice defensive driving techniques on this interstate.



Ask an Attorney about Indiana’s Most Dangerous Interstates

Indiana drivers should take precautions when driving these interstates due to the higher risk of accidents. As with most interstates, the high speeds make driving particularly dangerous and accidents particularly severe. High speeds increase a driver’s risk of losing control of their vehicle and amplify the severity of the crash.

All roads can be dangerous, but you can mitigate your risk of injury by practicing safe and defensive driving. Remember to always travel at the posted speed limit or at a speed that is suitable for the weather conditions, avoid distractions while driving, and give plenty of space to other cars on the road.

If you were hurt in an auto accident in Indiana, contact our experienced lawyers. We work to protect your rights and get you the compensation you deserve for your injuries.

Read more at:
<https://yoshalawfirm.com/blog/>

